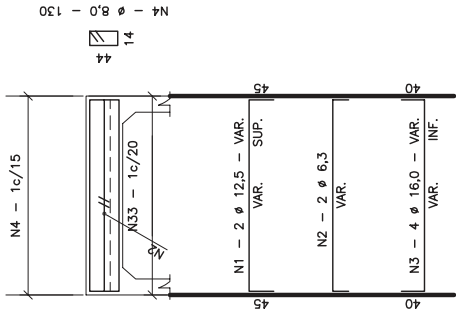
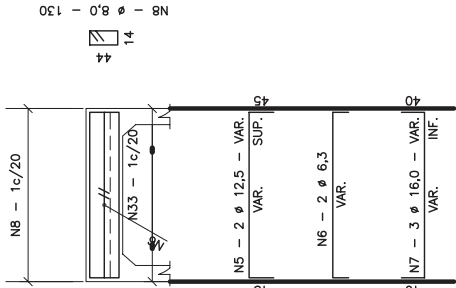


VIGA DE TOPO DA LAJE SUPERIOR -  $\alpha = 0^\circ$  e  $15^\circ$

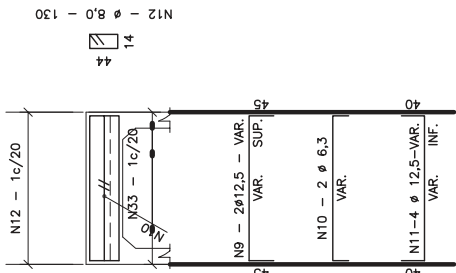
L=300 (2x)



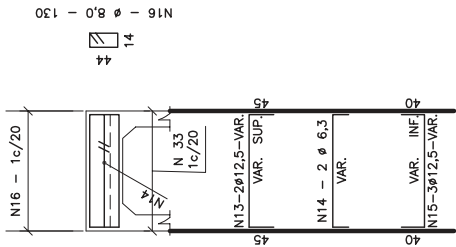
L=250 (2x)



L=200 (2x)

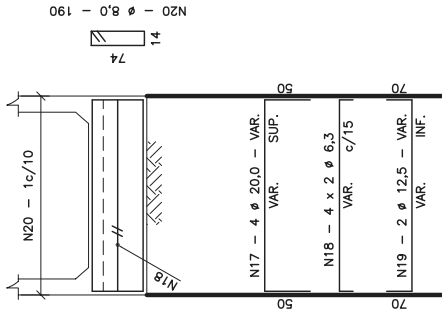


L=150 (2x)

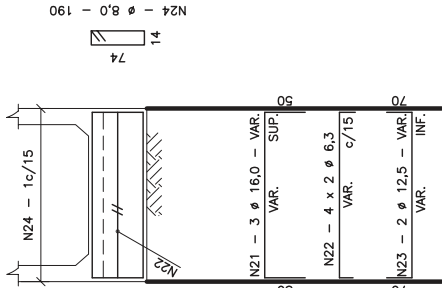


VIGA DE TOPO DA LAJE INFERIOR -  $\alpha = 0^\circ$  e  $15^\circ$

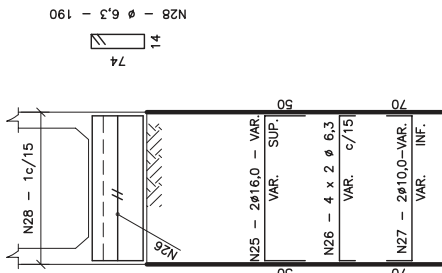
L=300 (2x)



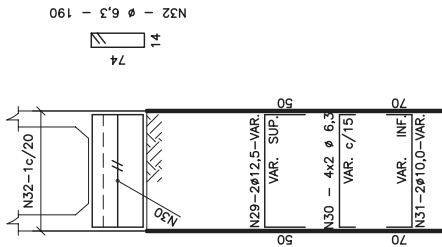
L=250 (2x)



L=200 (2x)

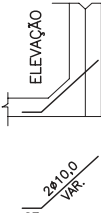


L=150 (2x)

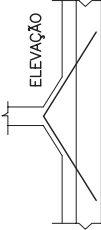


MÍSMULAS

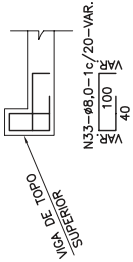
SUPERIOR E INFERIOR



SUPERIOR E INFERIOR



SEÇÃO



NOTAS:

- 1 - VER RESUMOS NO DESENHO 6.42
- 2 - TABELA PARA DUAS CABECEIRAS
- 3 - VER NOTAS E COMPLEMENTOS DESTA NO DESENHO 6.23

MT DEPARTAMENTO NACIONAL DE INFRA-ESTRUTURA DE TRANSPORTES - DNIT

IPR

BUEIROS SIMPLES CELULARES DE CONCRETO  
ARMADURA DAS VIGAS DE TOPO - ESC. 0° E 15°

ALBUM DE PROJETOS-TIPO DE DISPOSITIVOS DE DRENAGEM

DESENHO  
6.29